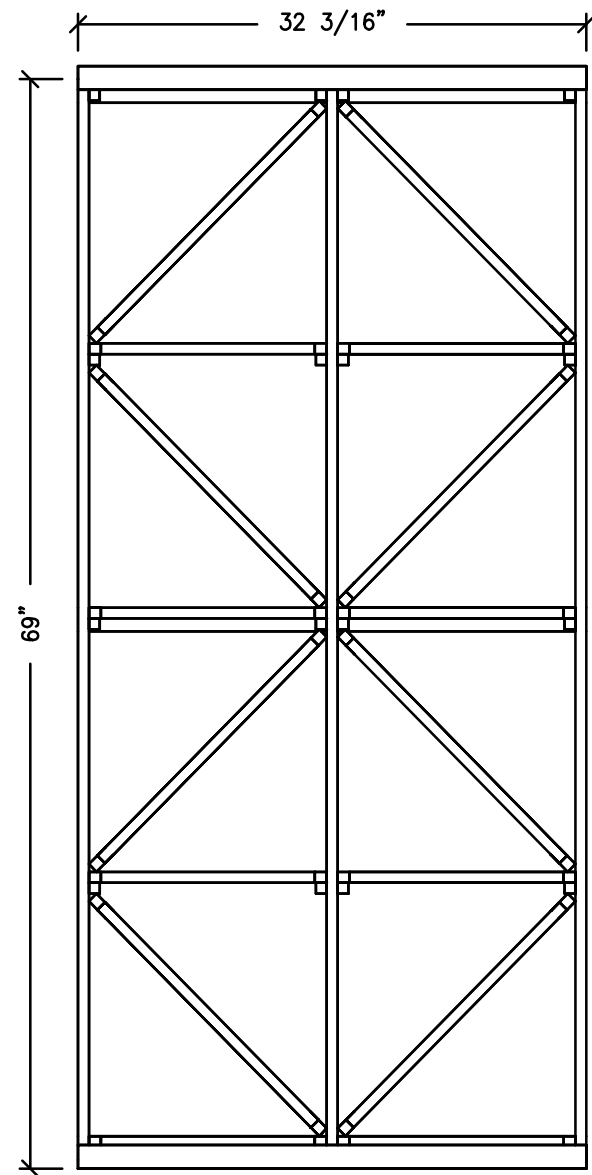
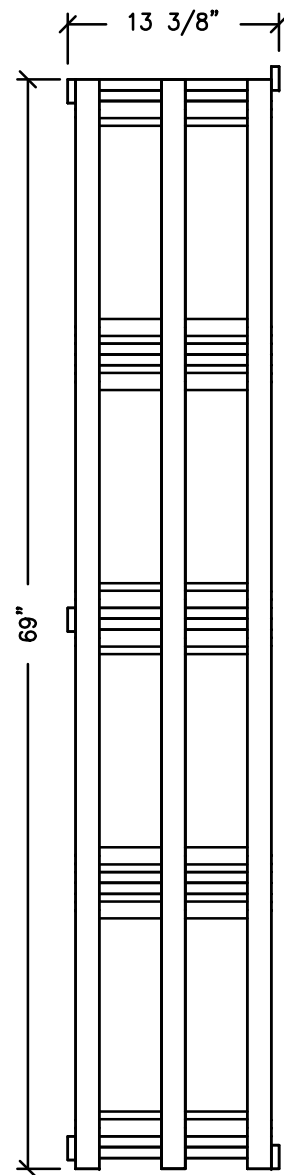


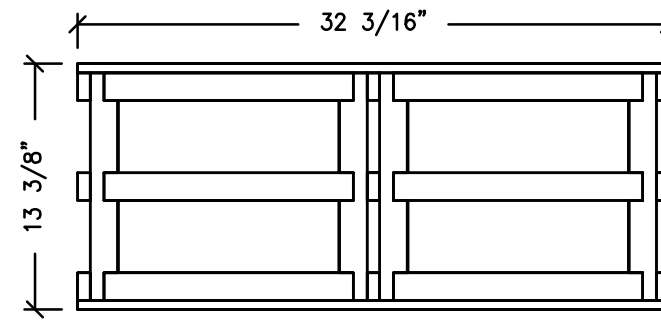
ASSEMBLY INSTRUCTION



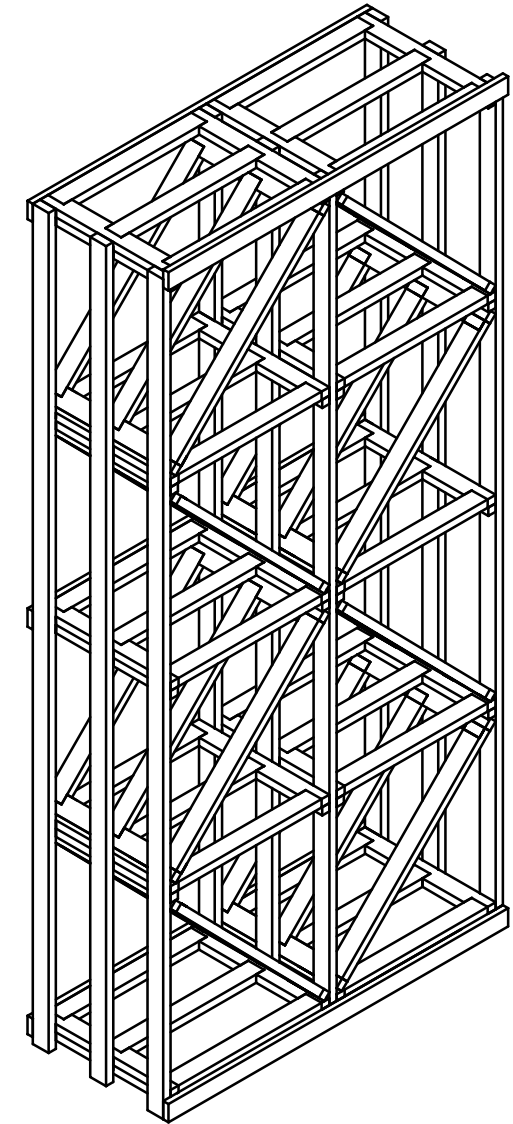
BD-6.1
Front view



BD-6.1
Side view



BD-6.1
Top view



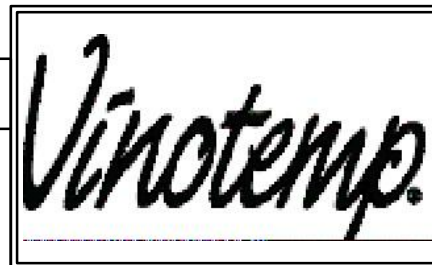
ISOMETRIC

REVISION KIT NAME: Diamond Cube

0

No. BD-6.1
DATE: APR/25/18
DRAW: DANIEL D.

NOTES:
1.- 11/16" THICKNESS
2.- PRODUCTION TOLERANCE 0-1/16"
3.- ALL DIMENSION HAVE TO VERIFY ON FIELD



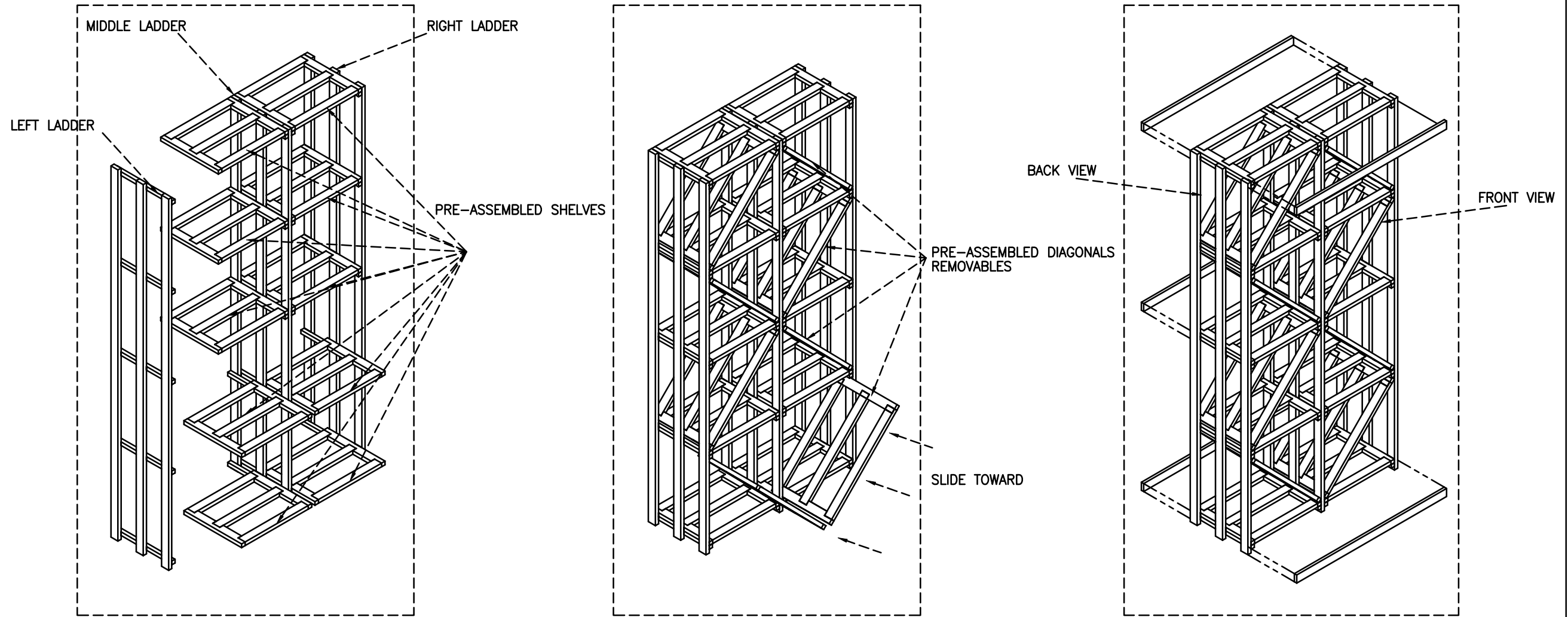
REVISIONS		
REV.	DATE	DESCRIPTION

P-1

APPROVED BY:

DATE:

ASSEMBLY INSTRUCTION



Step 1.- Arrange ladders. Right, left and middle have the same siding on both sides.
Place 1 pre--assembled shelf on the third rung between middle ladder and end ladder. From the inside, either brad nail or screw the shelves onto the rung. Then place the other shelves onto the remaining rungs and attach in the same way.

Step 2.- Place each diagonal into the bin opening. They can be placed into the bin opening or they can be nailed into the bin opening. Either way is fine

Step 3.- Take the trim pieces and attach them in the front section. Place 2 trims, 1 in the bottom and the other in the top. Take the last 3 trim pieces and attach them to the 1st, 3rd and 5th shelf from the bottom to the top on the back section. All of this should be placed so the remaining trim is up.
The exposed area of the trim will be used to screw through into the wall to secure the rack to the wall.

P-1

REVISION	KIT NAME: Diamond Cube	
0	No. BD-6.1	NOTES:
	DATE: APR/25/18	1.- 11/16" THICKNESS
	DRAW: DANIEL D.	2.- PRODUCTION TOLERANCE 0-1/16"
		3.- ALL DIMENSION HAVE TO VERIFY ON FIELD



REVISIONS		
REV.	DATE	DESCRIPTION

APPROVED BY:

DATE: