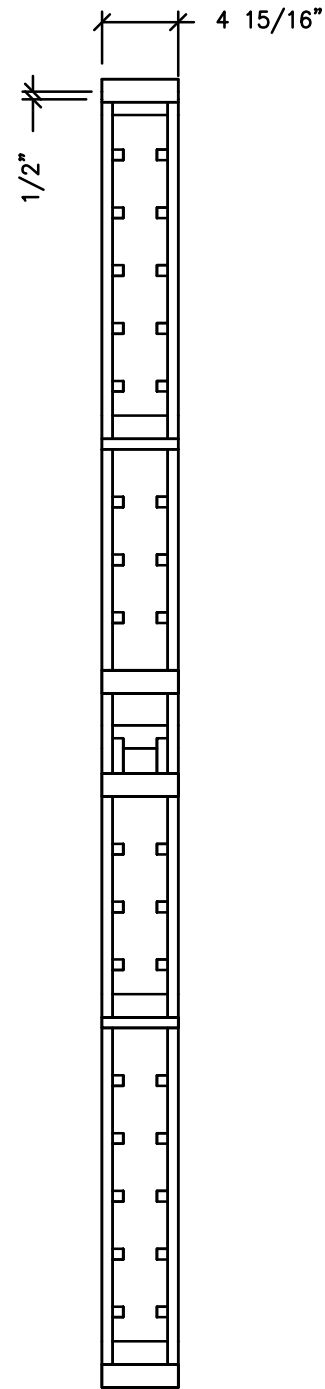
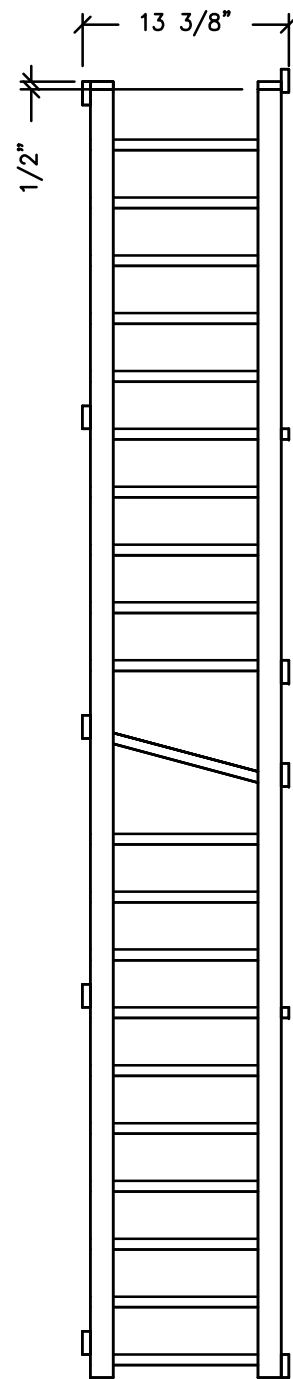


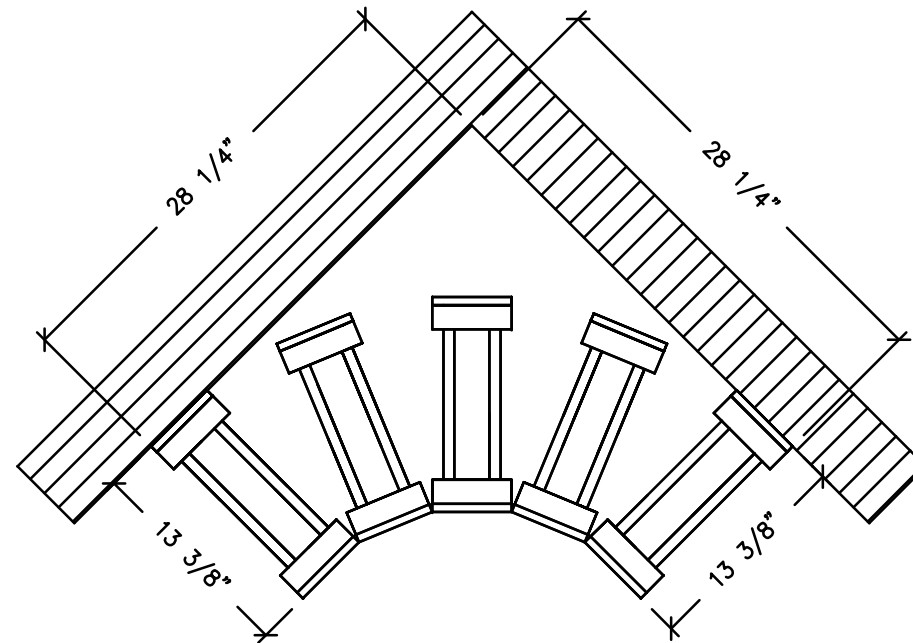
ASSEMBLY INSTRUCTION



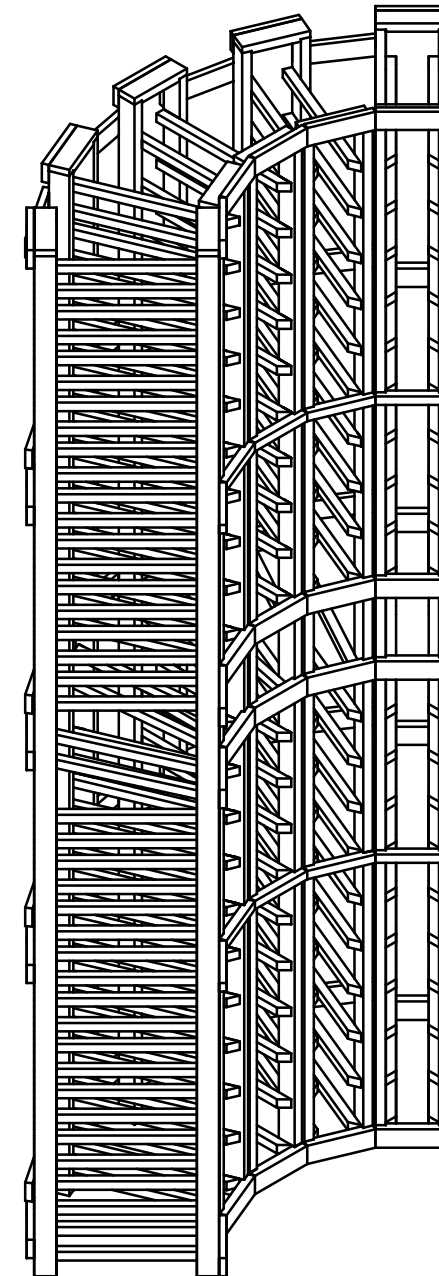
CRV-7
Front view



CRV-7
Side view



CRV-7
Top view



ISOMETRIC

P-1

REVISION	KIT NAME: Individual Curve Corner	
0	No. CRV-7	NOTES: 1.- 11/16" THICKNESS 2.- PRODUCTION TOLERANCE 0-1/16" 3.- ALL DIMENSION HAVE TO VERIFY ON FIELD
	DATE: APR/25/18	
	DRAW: DANIEL D.	



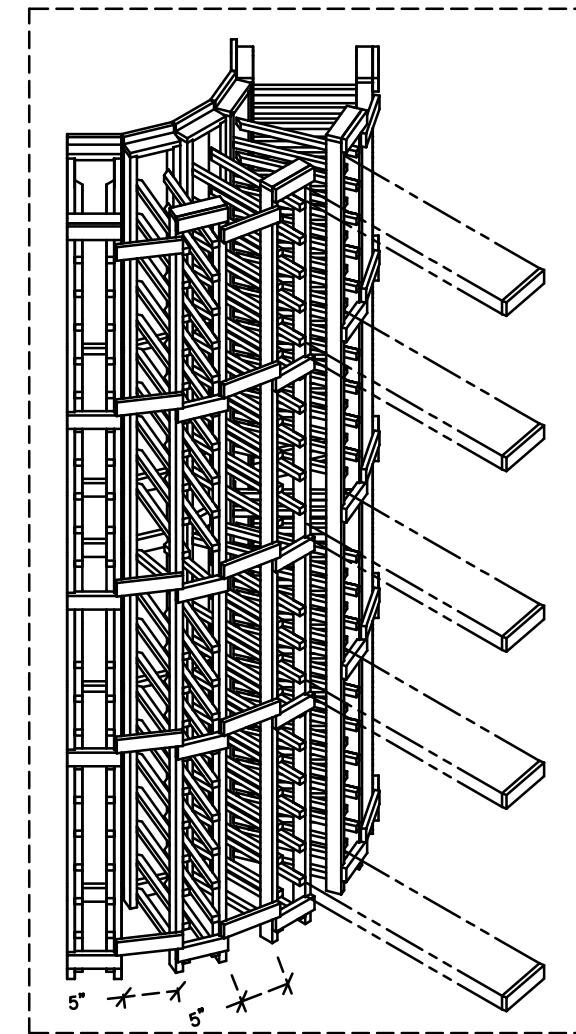
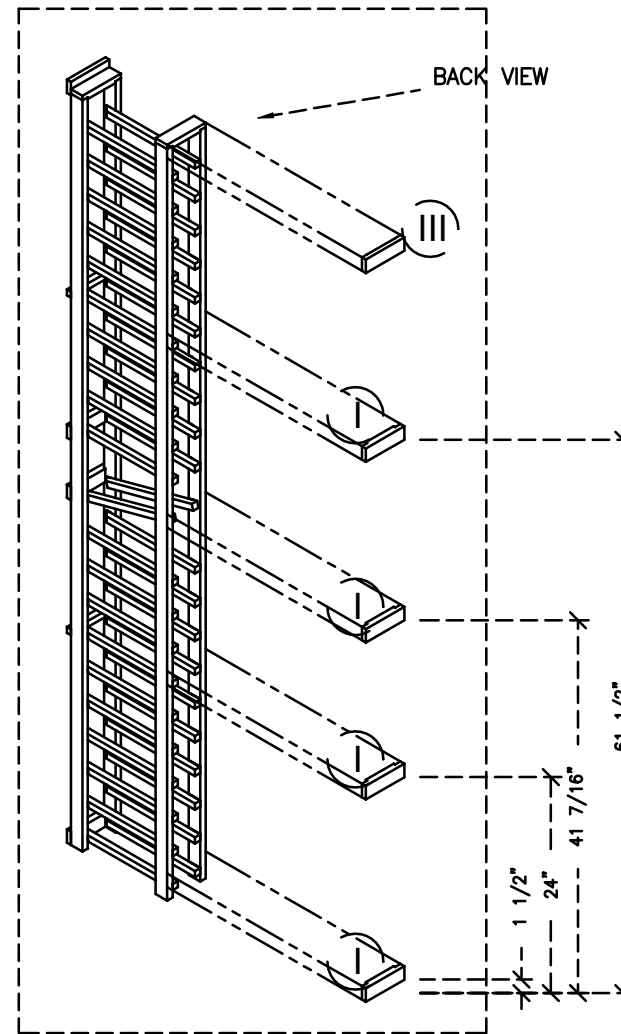
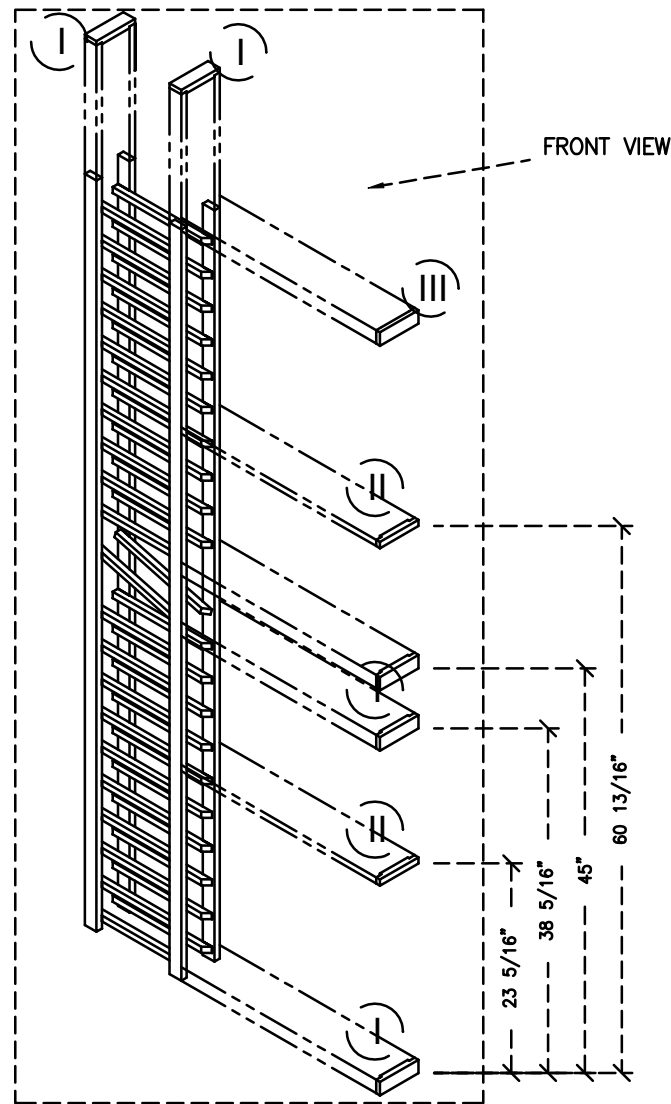
REVISIONS		
REV.	DATE	DESCRIPTION

APPROVED BY:

DATE:

*Proprietary Trademark Infringement- Designs are proprietary and cannot be copied or shared with others without our written consent.

ASSEMBLY INSTRUCTION



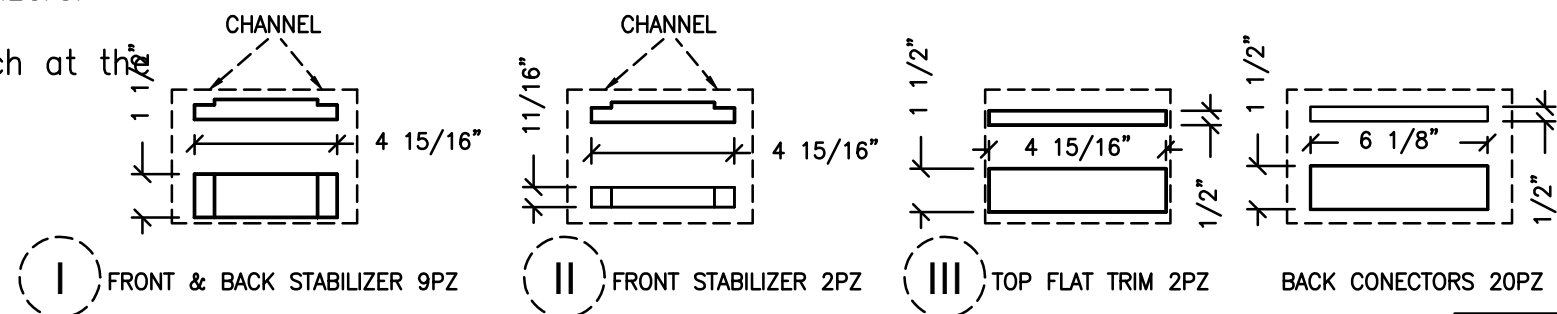
Step 1.- Stand the left and right ladder making sure the angle display is facing you, then place the front stabilizers at the indicated dimensions and the top stabilizers. Nail each ladder onto stabilizers.

Step 2.- Attach the back stabilizers at the indicated dimensions. Nail each ladder onto stabilizers. Repeat step 1 and 2 for the other columns.

Step 3.- From the back of the 5 columns, carefully spread each column 5" wide. Make sure to keep the front part of the racking tightly together. Only spread 1 column at a time. There are 5 back spreaders per column that are attached to the back to keep the spread of the columns apart. Take 1 of the back connectors and rest it on top of the stabilizers.

Note 1. All dimensions are from floor to bottom of stabilizers.

Note 2. The last stabilizers are flat trims. You may attach at the height you need.



P-2

REVISION	KIT NAME: Individual Curve Corner	
0	No. CRV-7	NOTES: 1.- 11/16" THICKNESS 2.- PRODUCTION TOLERANCE 0-1/16" 3.- ALL DIMENSION HAVE TO VERIFY ON FIELD
	DATE: APR/25/18	
	DRAW: DANIEL D.	



REVISIONS		
REV.	DATE	DESCRIPTION

APPROVED BY:
DATE: