

TERMS & CONDITIONS

Vinotemp International ("Seller") and the person or entity that acquires these goods from Seller ("Purchaser") hereby fully agree to the following terms and conditions of the sale: Shipping fees are the responsibility of the Purchaser whether freight prepaid or freight collect. Seller assumes no responsibility for the goods sold to the Purchaser once the goods have left the Seller's premises, including, but not limited to, late delivery, or for events caused by any difficulty carrier incurs in attempting to fit the goods into the Purchaser's place of business or residence. Purchaser assumes all responsibility for delivery, payment of freight, access, measurement, installation, hook-up, wiring, moving and storage of the goods. Transportation of all goods is subject to the terms and conditions which the moving carrier imposes on Purchaser including, but not limited to, additional charges imposed per flight of stairs. Any claim for damages incurred during shipment by the carrier of the goods are insured and handled directly with the carrier. Any damages due to manufacture defects will be handled directly with Vinotemp International, subject to the limited warranty.

All sales are final, and unless authorized in writing by the Seller, Purchaser may not return the goods, under any circumstance. If Purchaser refuses to accept the goods, under any circumstance, the Purchaser is liable for the return and cost of freight both ways, and if Seller does take back the goods, there will be a restocking charge that is 35% of the purchase price of the goods. Purchaser must notify Seller of non-conforming goods within four days of delivery, after which time all goods are deemed accepted. Finance charges begin the date of invoice. Title to the goods does not pass until payment is received in full by Seller and Seller retains a security interest in the goods until they are paid for in full.

LIMITED WARRANTY: Seller warrants that the goods will be free of defects in materials and workmanship as follows for Thermoelectric Units: Parts ninety days from the date of sale. Removal and re-installation of unit is not included in warranty. There is no warranty on parts purchased separately. Purchaser's exclusive remedy is limited, at Seller's option; to repair or replace defective part[s] with either new or factory reconditioned part[s]. Purchaser is responsible for shipping the unit pre-paid to designated facility and Seller will pay return shipping charges in the continental United States for items repaired under warranty within three months from date of sale. Improper placement of the unit will void the warranty. This limited warranty does not cover damage due to such things as accident, misuse, abuse, mishandling, neglect, acts of God, fires, earthquakes, floods, high winds, government, war, riot or labor trouble, strikes, lockouts, delay of carrier, unauthorized repair, or any other cause beyond the control of the Seller, whether similar or dissimilar to the foregoing. Seller is not responsible for any damages caused to Purchaser's property resulting from the goods. This limited warranty applies only inside the Contiguous US. (Alaska, Puerto Rico and Hawaii are not warranted.) Purchaser understands and acknowledges that the goods sold here are wine cellars or other similar units. Purchaser assumes all risk of using these units, including risk of spoilage, humidity variations, temperature variations, leaks, fire, water damage, mold, mildew, dryness and similar and any other perils that might occur.

Seller is not responsible for incidental or consequential damages, and there are no warranties, expressed or implied, which extend beyond the Limited Warranty described above. The implied warranties of merchantability and of fitness for a particular purpose are hereby expressly disclaimed. Some states do not allow the exclusion of incidental or consequential damages, or a waiver of the implied warranties of fitness and/or merchantability, so the above limitations may not apply to you. This warranty gives you specific legal rights and you may also have other rights which vary state to state.

In the event of any dispute between Seller and Purchaser arising out of or relating to these terms and conditions or to the goods sold generally, Purchaser must first file a written claim with Seller within ten days of the occurrence giving rise to the claim and wait an additional thirty days for a response before initiating any legal action. The sale and all terms are subject to California law. Any legal proceeding arising out of or relating to these terms and conditions or to the goods sold generally shall be brought solely and exclusively in the County of Los Angeles. In no event may Purchaser initiate any legal proceeding more than six months after the occurrence of the event giving rise to the dispute.

The above terms and conditions are the only ones governing this transaction and Seller makes no oral representations of any kind. These Terms and Conditions can only be modified in writing, signed by both Purchaser and Seller. 2009

Vinotemp®

A PROUD HERITAGE OF EXPERIENCE & QUALITY



CHAMPAGNE CHILLER

VT-CHILLER-CHA

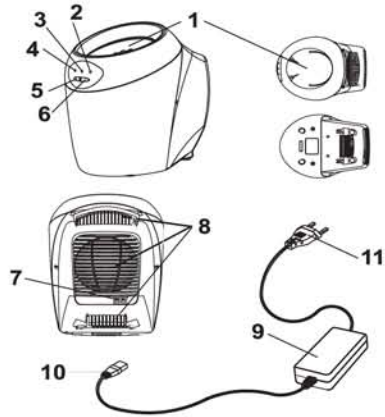
Owner's Manual

17621 South Susana Road., Rancho Dominguez, CA 90221

WWW.VINOTEMP.COM

WWW.VINOTEMP.COM

PARTS & SPECIFICATIONS



1. Aluminum container
2. LED light for 62°F
3. LED light for 52°F
4. LED light for 41°F
5. Power switch
6. Select button
7. DC input port
8. Cooling fan exit
9. Power adapter
10. Power adapter DC output
11. Power adapter AC output

FEATURES

The Champagne Bottle Cooler uses Peltier technology to cool the champagne. It is very easy for users to keep wine at cool temperatures and enjoy their drink.

Quick effective chilling with 3 temperature settings:

- 41° for champagne, white and rose wines
- 52° for non-aged red wines
- 62° for aged red wines

Note: Please read all instructions before use.
Specifications are subject to change for improvement without prior notice



SPECIFICATIONS

- Aluminium container: 90-100mm internal diameter
- Fan: 90x90mm brushless motor
- High temperature protection: 158°F
- Switching mode power supply: 12V 5A
- Power consumption: 60W
- Dimensions: 170Dia x 275H (mm) / 6.7Dia x 10H (in)

CONNECTION

Remove all packaging materials. There should be 2 items:

1. Champagne Bottle Cooler unit
2. AC/DC switching mode power supply

OPERATION

1. Place a bottle of champagne into the unit.
2. Connect power adapter AC plug to the supply mains and the DC plug to the unit.
3. Press the 'POWER' button once to switch on the unit.
4. The 41°F LED illuminates and the unit starts to chill the champagne.
5. For other types of wines, press the 'SET' button to change the temperature setting. Press once to change to 52°F and again to 62°F. The LED of each setting illuminates respectively.
6. Once the wine temperature reaches the set temperature, the LED of the set temperature flashes at 0.5 second intervals.

CAUTION

- NEVER put ice or water inside the container for cooling purpose.
- After having finished using the Wine Bottle Cooler, the user should disconnect the AC plug of switching mode power supply from the main socket.
- Do not operate the AC/DC switching mode power supply in wet or damp place.
- Do not operate your product with any paper, plastic bag or cloth on the back of the Wine Bottle Cooler that may block the air inlet.
- If there is no power coming from the switching mode power supply unit, it should be checked by an electrical technician.
- To avoid electric shock, do not open the casing there are no user serviceable parts inside.
- Any repair work must be done by a qualified technician supported by our distributors.
- For indoor/household use only.
- Do not use for other than intended purpose.