

## Operation Instruction of Display Board And Main Control Board Of VT60

### Display Board Changing

1. Separate the decoration stripe from the control board, then exposure four fixture screw holes on the control board(See picture 1).



Picture 1

2. Screw off the four fixture screws of the control board covering(See picture 2), then exposure the display board(See picture 3).

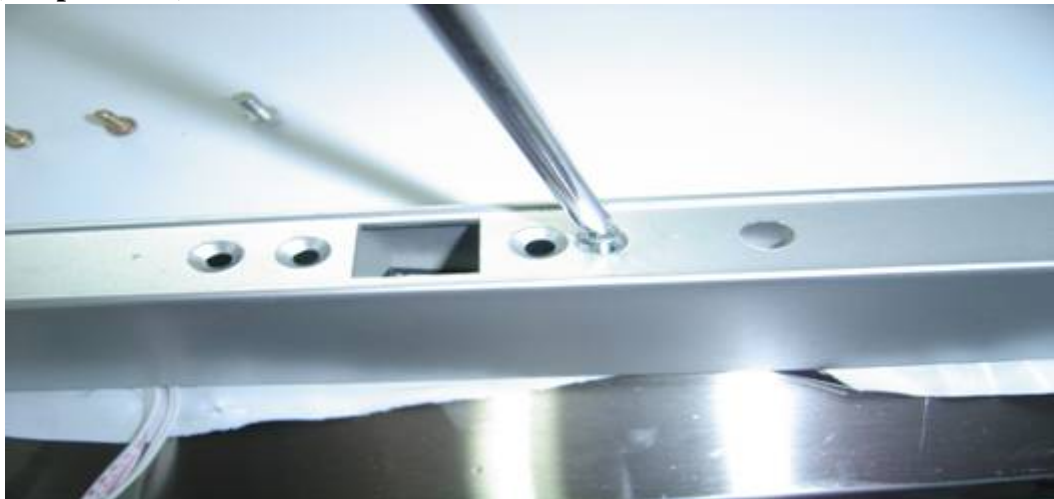


Picture 2



**Picture 3**

3. Screw off the four fixture screws of the display board(See picture 4) , then pull out the two lines(See picture 5).



**Picture 4**



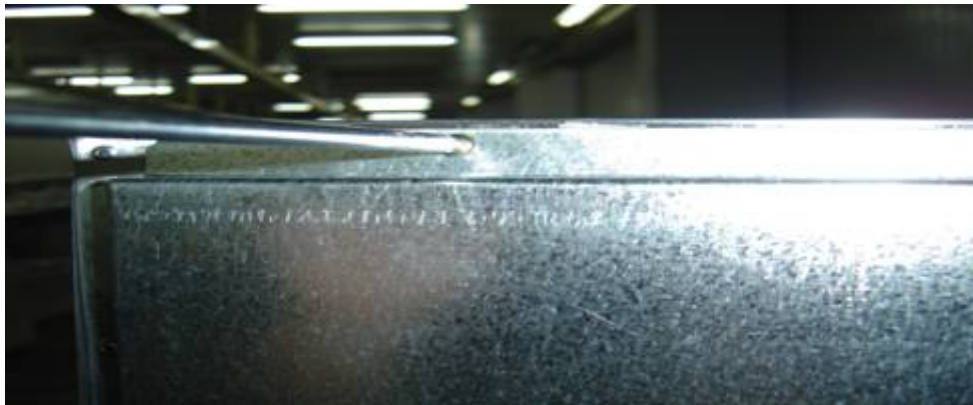
**Picture 5**

**4. Replace display board. The procedures as following:**

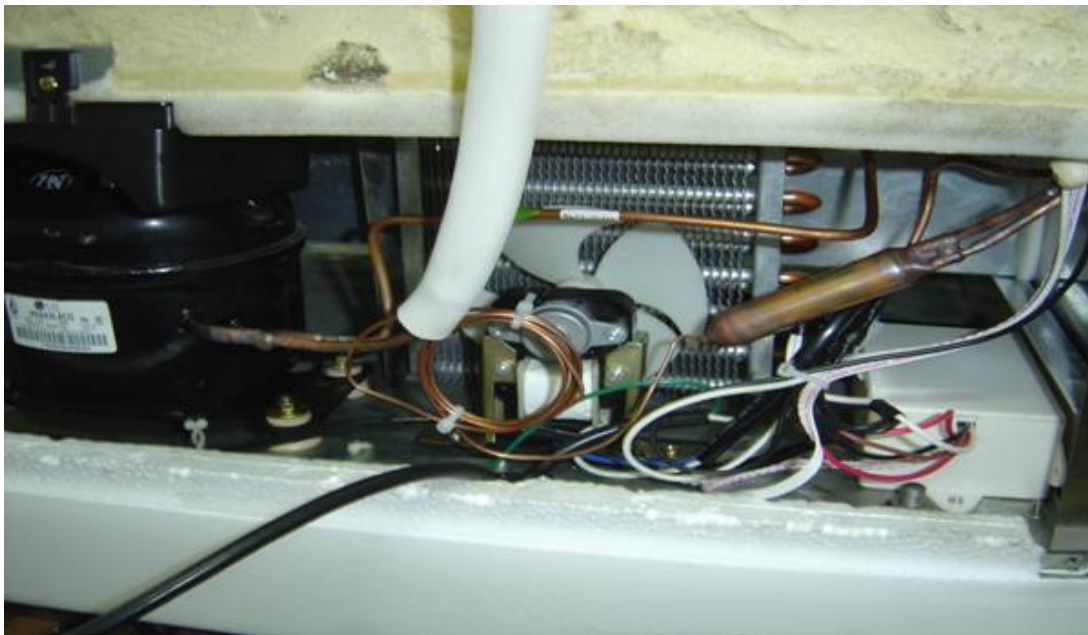
- a. Connect the two lines, then screw the four fixture screws of the display board.**
- b. Screw the four fixture screws of the control board covering.**
- c. Fix the decoration stripe from the control board.**

## **Main Control Board Changing**

- 1. Screw off the fixture screw of the back covering board (See picture 6), then exposure the main control board box(See picture 7).**



**Picture 6**



**Picture 7**

- 2. Screw off the fixture screw of the main control board box (See picture 8), screw off the fixture screw of the main control board box covering (See picture 9), then exposure the main control board.**

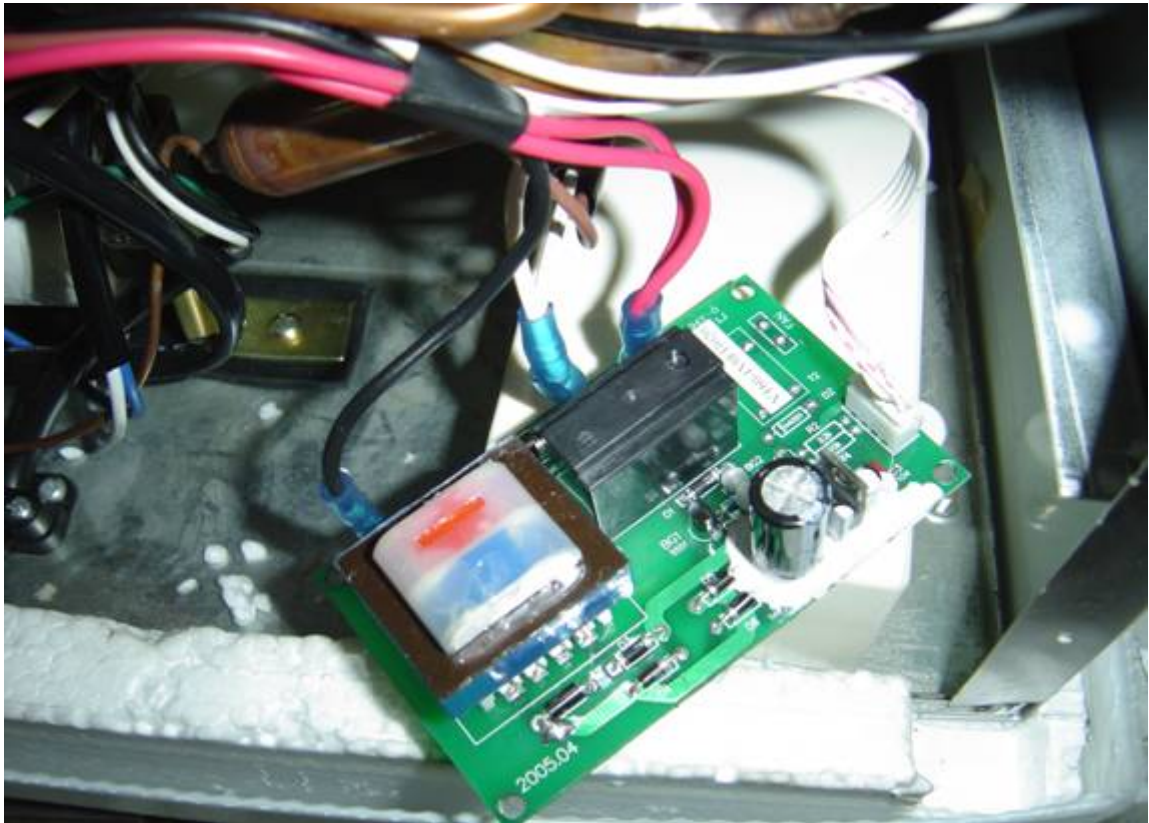


**Picture 8**



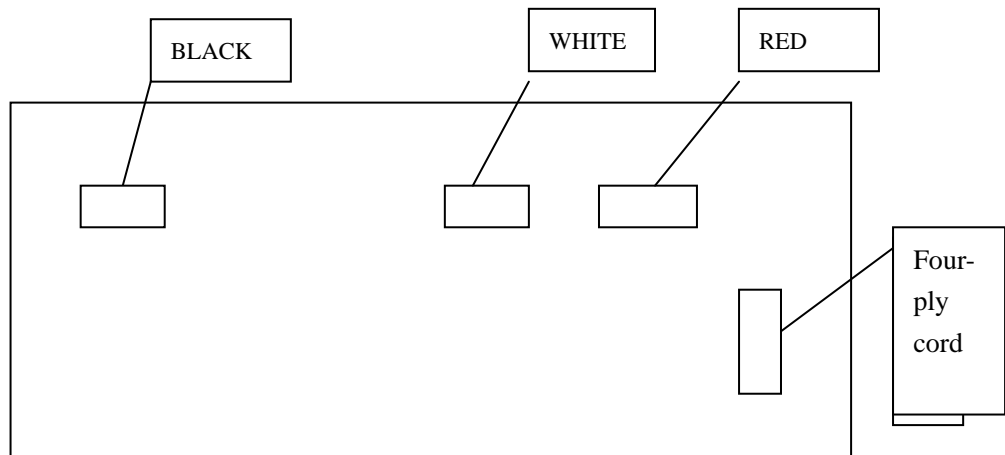
**Picture 9**

**3. Screw off the four fixture screws of the main control board, then pull out the four lines (See picture 10).**



**Picture 10**

***NOTE: When you pull out the lines, please remind the position of each line! See picture 11.***



**Picture 11**

**4. Replace main control board. The procedures as following:**

- a. Connect the four lines, then screw the four fixture screws of the main control board.**
- b. Screw the fixture screw of the main control board box covering, Screw the fixture screw of the main control board box.**
- c. Screw the fixture screw of the back covering board.**