

VT-21TEDS-2Z

VT-21TEDS-2Z, replacing the Temperature Display Board

Open the wine cooler door, you will find two screw caps on the temperature display board



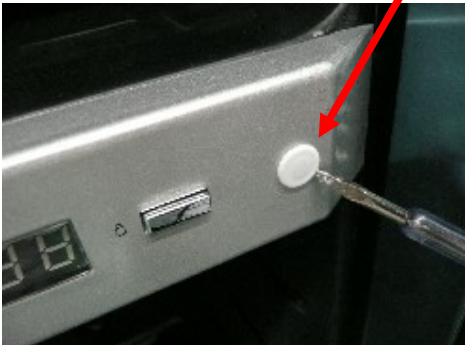
Then use a screwdriver to gently open the screw cap



You will find a hole



Also open the other screw cap



In the two holes, there are two screws



Use a screwdriver to open the left screw



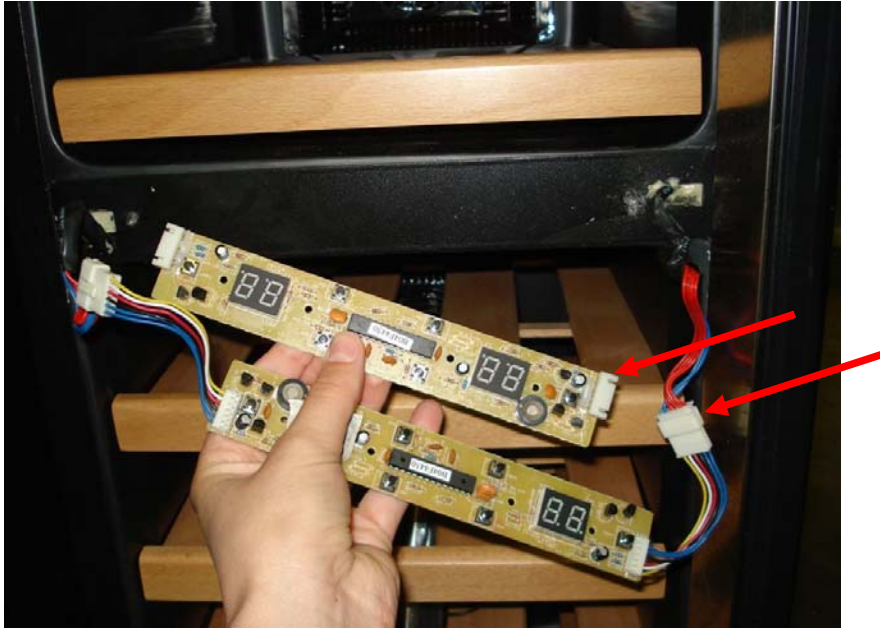
Then open the right screw



Now the display board will separate from the wine cooler



On the left and right side, you will find some wires and wire connections. There are two different types of boards that will both work. The picture below will show you the two boards and the two types of wiring connections.



Disconnect the wiring connections.

Note: if your board has the connections on it then carefully remove the connection from the board.



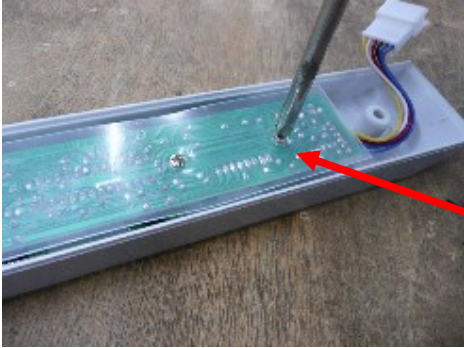
Take out the temperature display board from the wine cooler



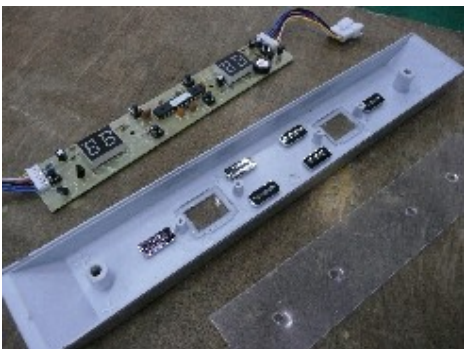
See the back of the temperature display board



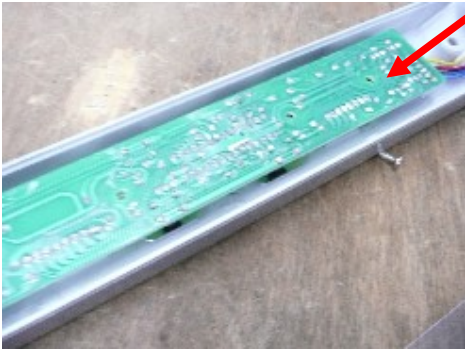
There are four screws, use a screwdriver to open them



Now take out the display board from the box



Then put the new display board on the box



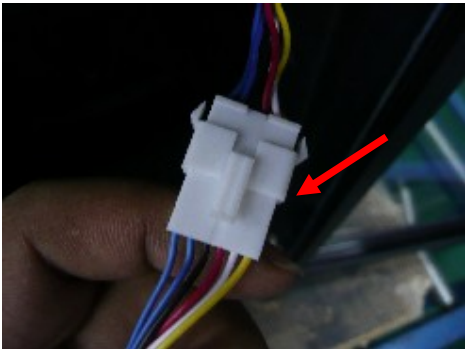
Now place the static prevention film back on.



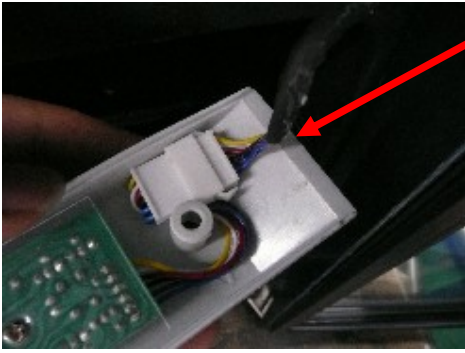
Put the screw's back on



Connect the temperature display wire from two sides



Place the wire and connection back into its housing. Please be careful not to crimp the wire.



Put the panel on the wine cooler according to the screw place



Put on the left and right screw



Put screw caps back on.



A new temperature display board is now installed

