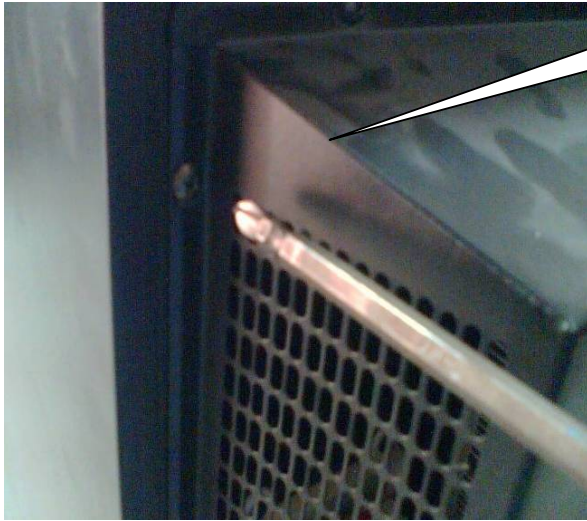
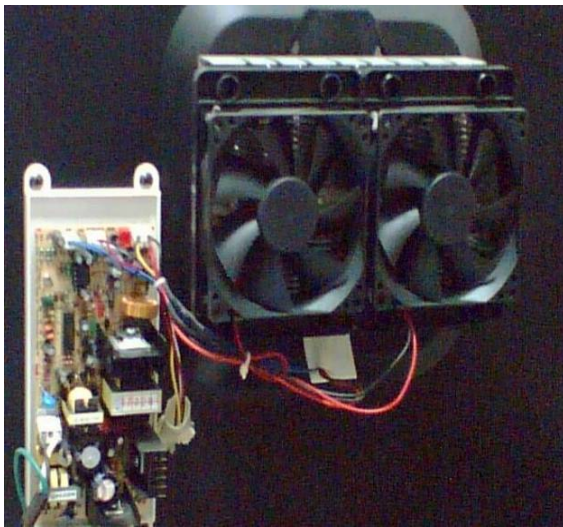


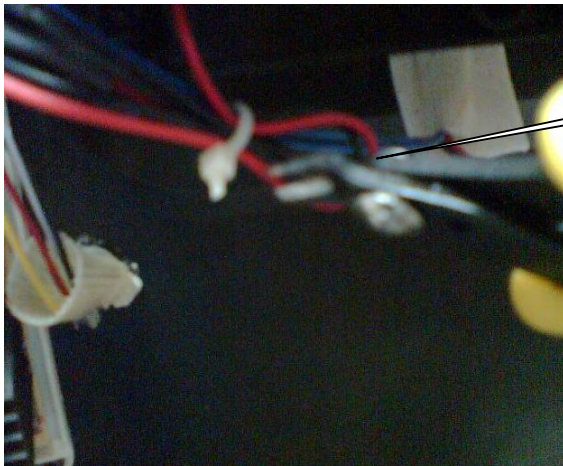
Instruction for changing a cooling system



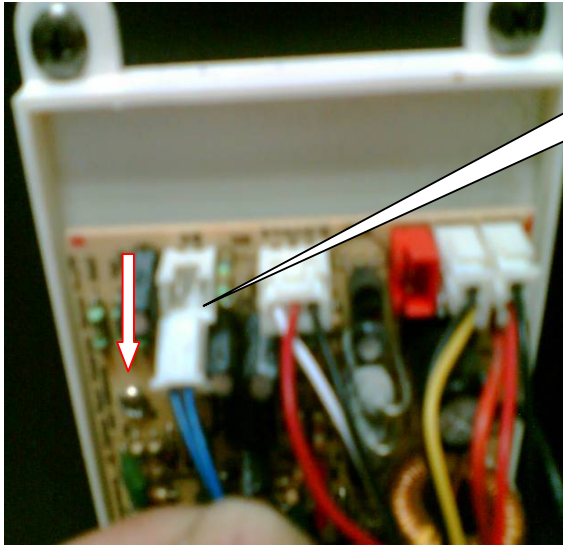
Take out the screws and take off the back cover



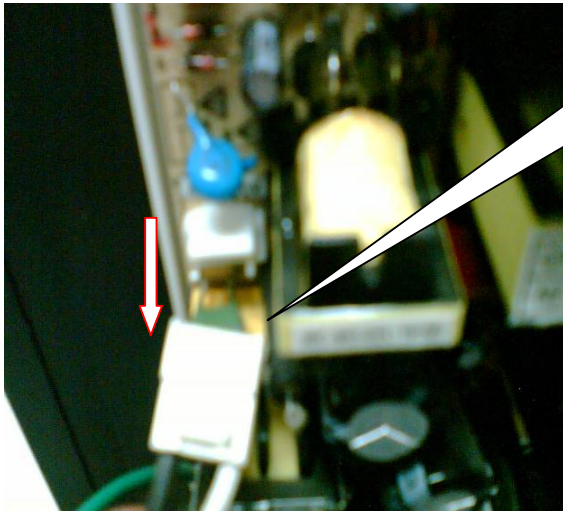
After take off the back cover



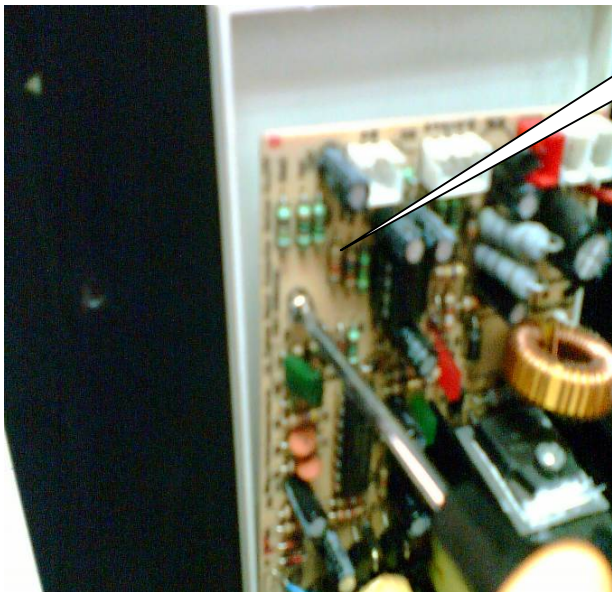
Cut the fastener



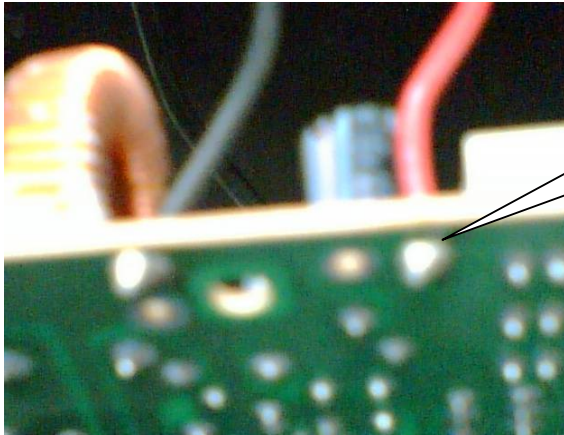
Disconnect the wires



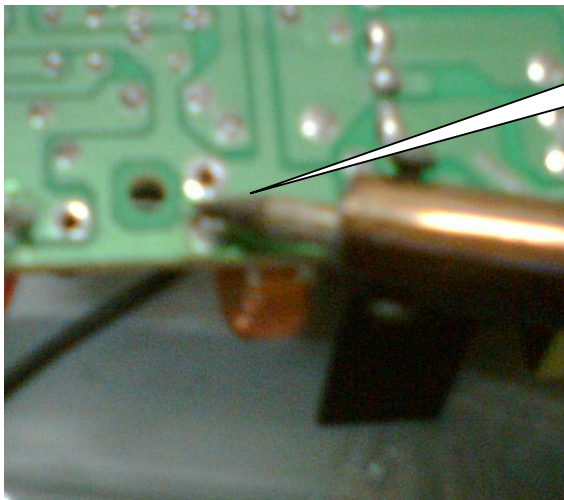
Take off the AC cord



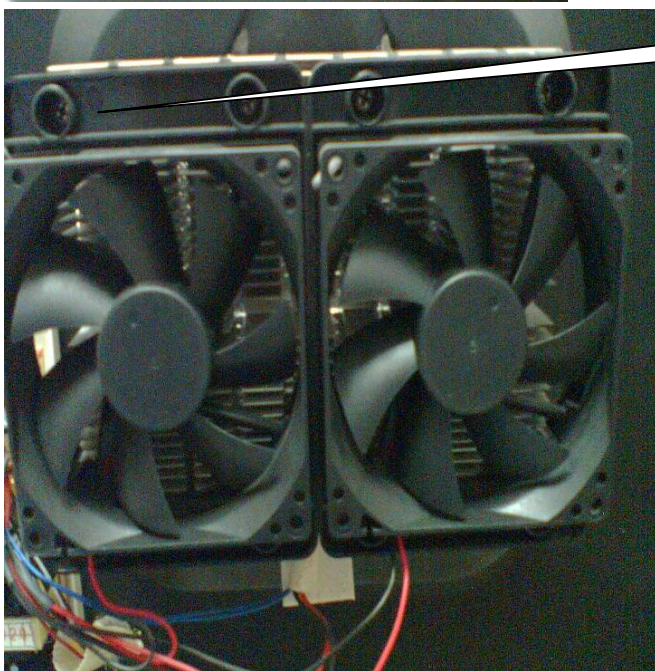
Take out the screws on the PCB.



Take off the PCB and see the two wires for cooling system



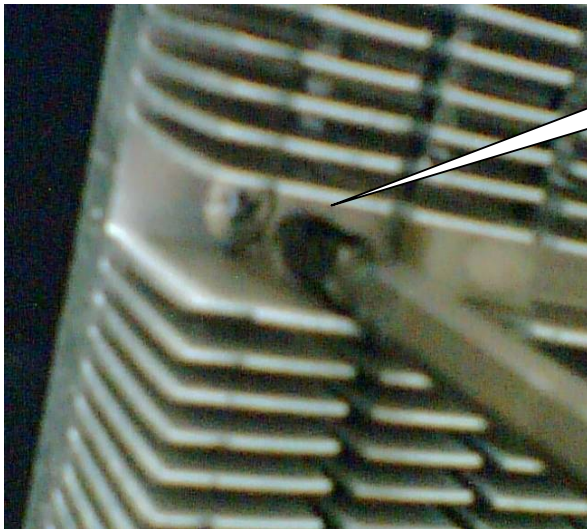
Take off the cooling system wires by using a iron



Take out the screws on the fans



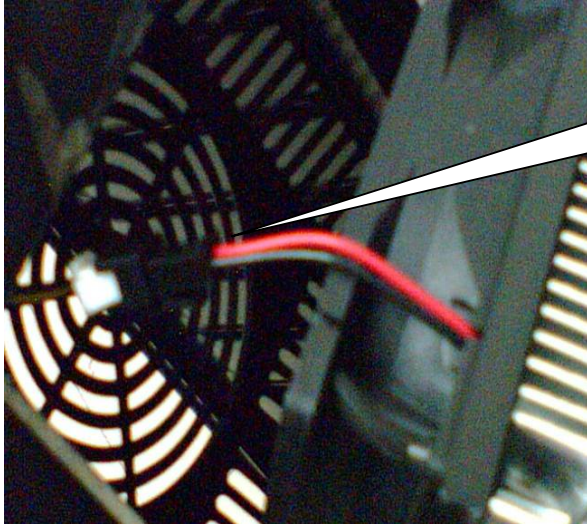
Take off the fans



Take out the screws on the hot aluminium



Take out the cooling system



After taking out the cooling system, you can see the connector for the cold fan.



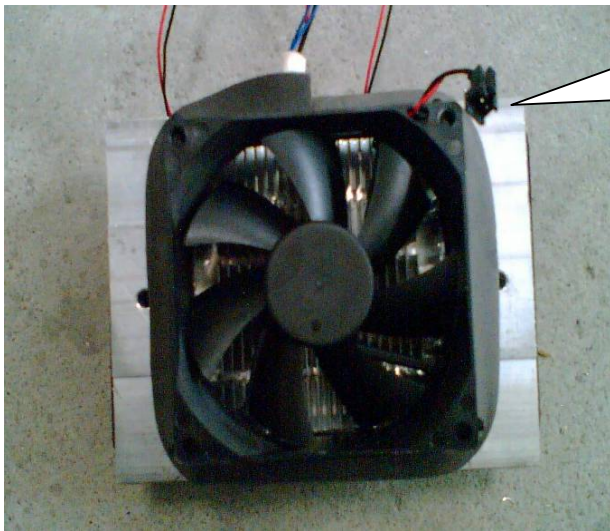
Disconnect the connector



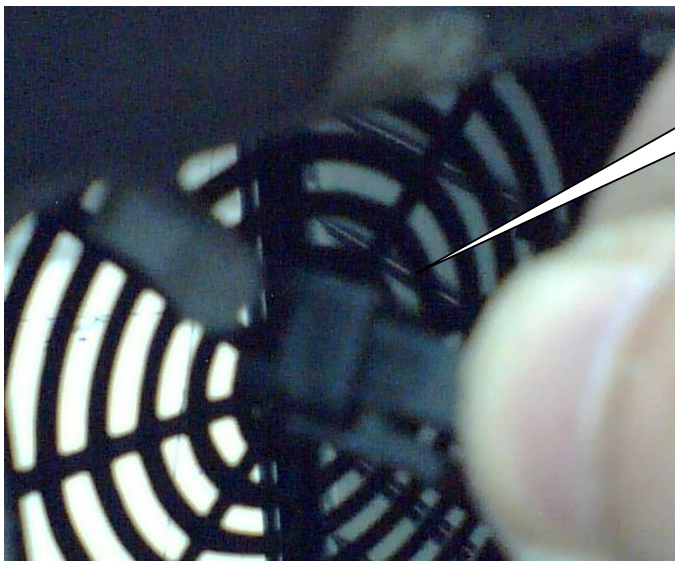
Take out the screws on the cold fan bracket



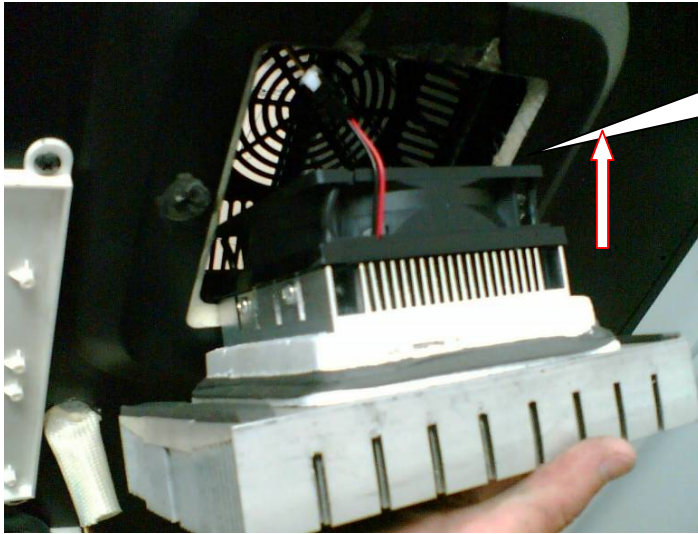
Change a new cooling system, and assemble it with the cold fan with the bracket



When assemble the cold fan, pay attention to the direction of the connector



Connect the connector



Put the new cooling system with cold fan back to the cabinet



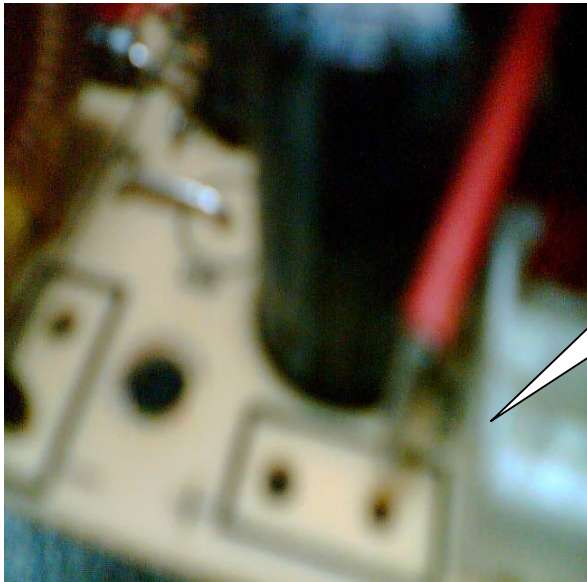
Put the screws on the hot aluminium.



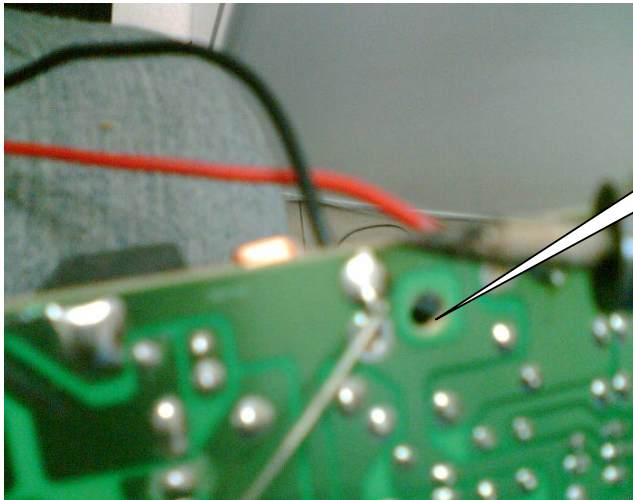
Put back the hot fans Please note that the position of the hot fan bracket is on the third groove of the aluminium



Put back the screws



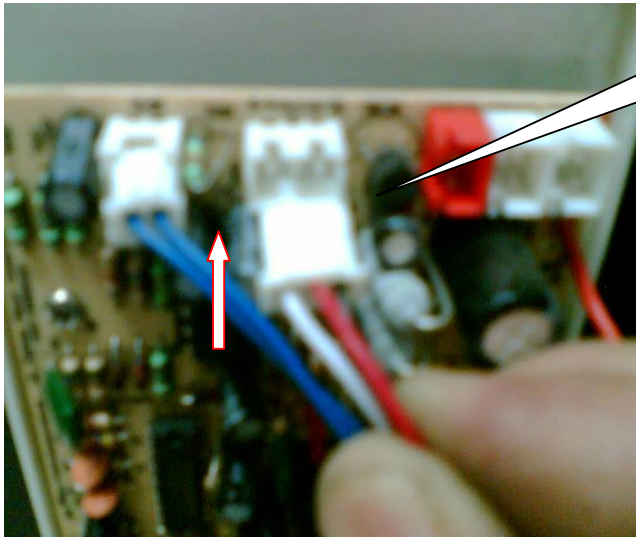
Connect the cooling system wires to the PCB, RED for + BLACK for — according to the + and — on the PCB



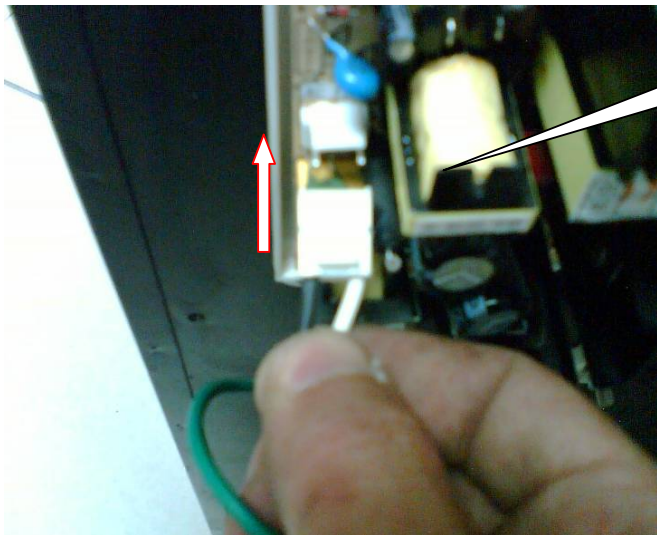
Joint the wires



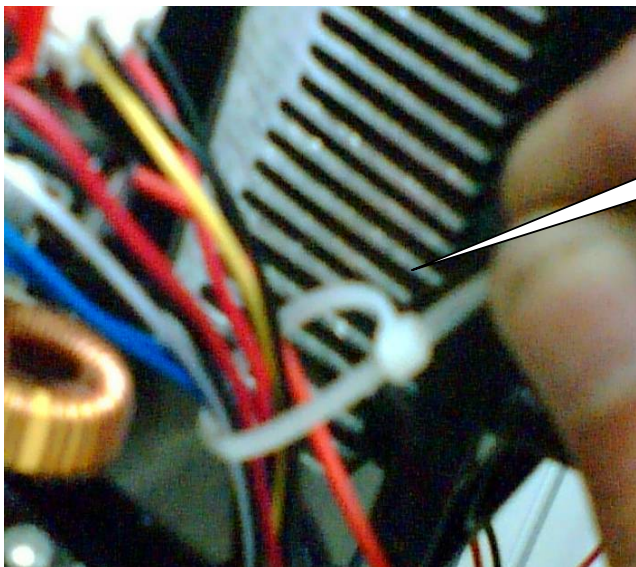
Put the PCB back to the cabinet.



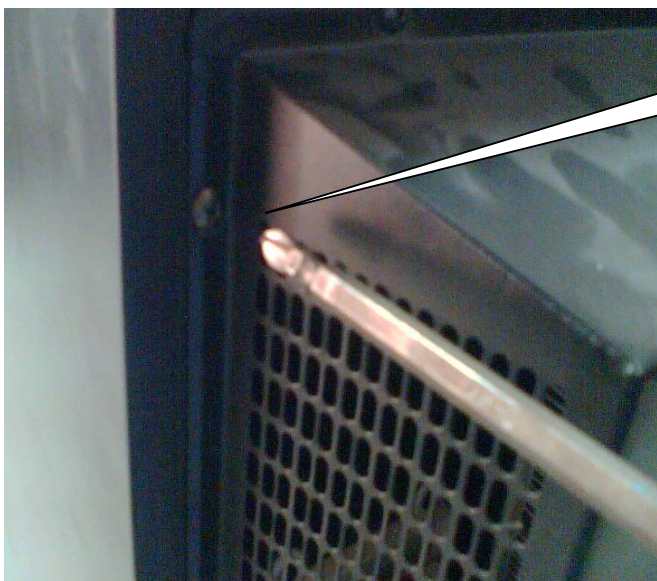
Connect the other connectors



Put back the AC cord connector



Fasten the wires with a fastener



Put back the back cover