

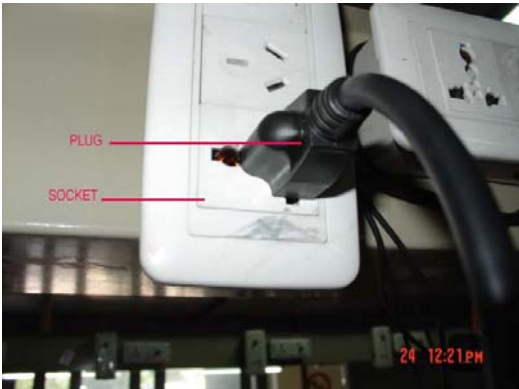
Troubleshooting (SC-130N)

Service tools



1、 the wine cellar does not get cold at all.

1-1、 Check to ensure the power plug is installed properly. If not connect the power or loosen, please connect it properly. (see the following picture)

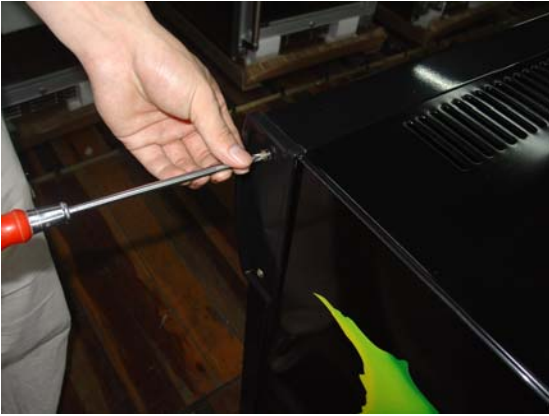


1-2、 Check the compressor work

1-2-1、 Take off the screws on the back panel.



1-2-2、 Take off the screws on the two side panel.



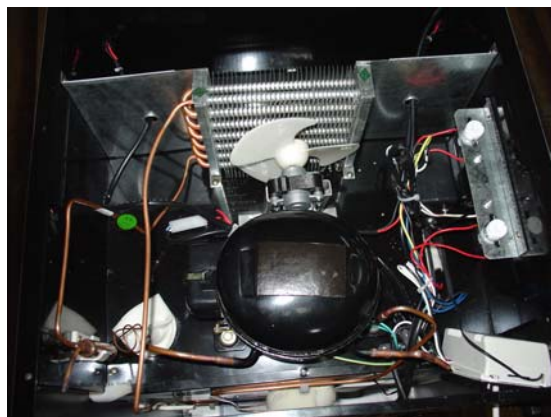
1-2-3、 Take off the two light box panels.



1-2-4、 Take off the top cover.



1-2-5、 Connect the power plug, then check the compressor is working and fan motor.

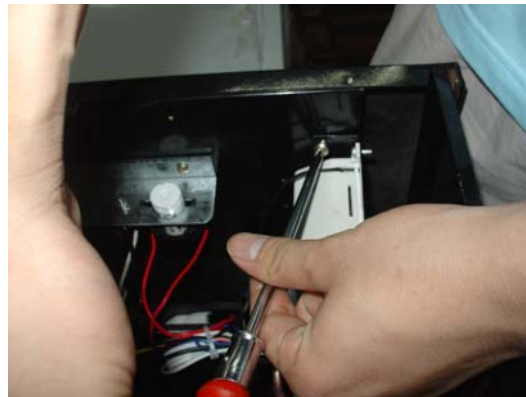
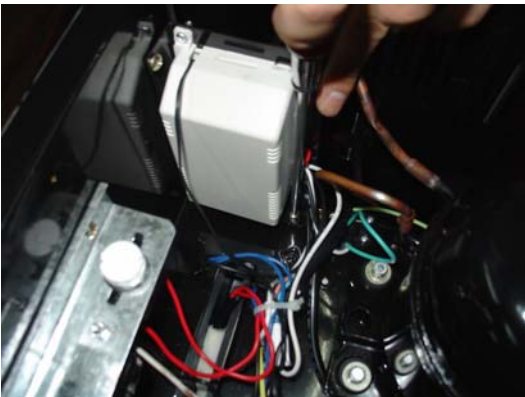


1-2-6、 If the compressor is not working, please replace the control board, as follows:

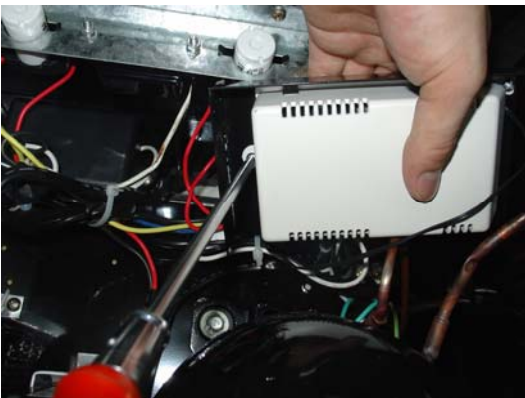
1-2-6-1、 Take off the knob.



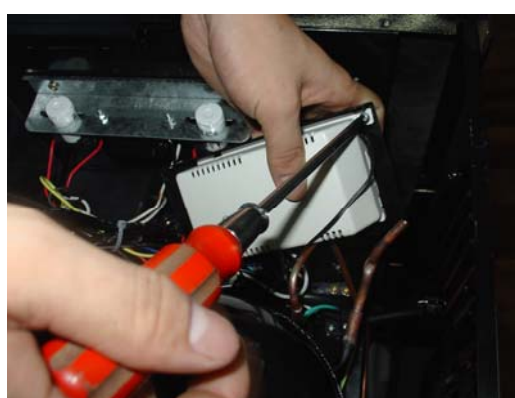
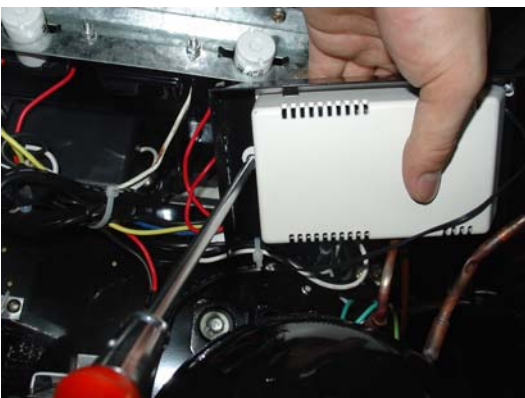
1-2-6-2、 Take off the screws on the control board box.



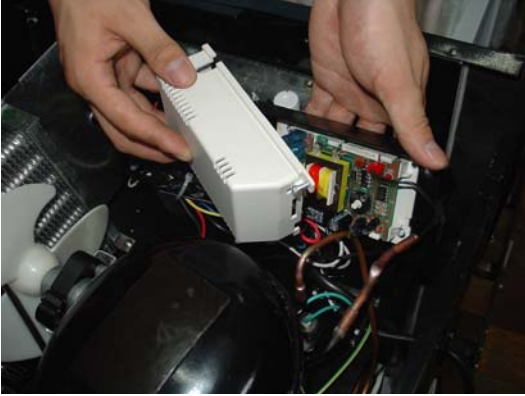
1-2-6-3、 Take off the control board box.



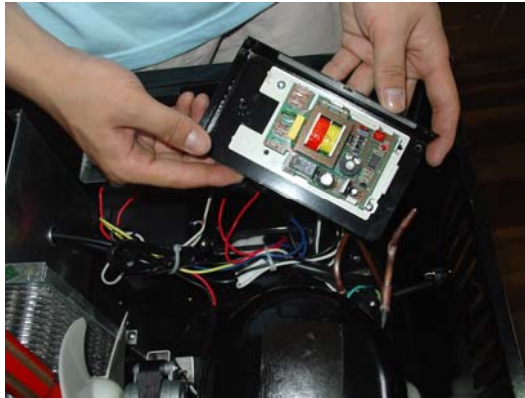
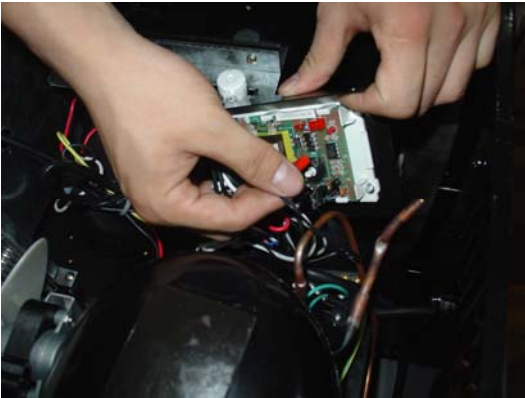
1-2-6-4、 Take off the screws on the control board cover.



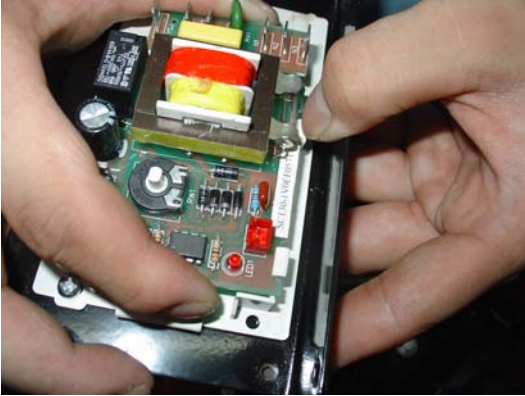
1-2-6-5、 Take off the control board cover.



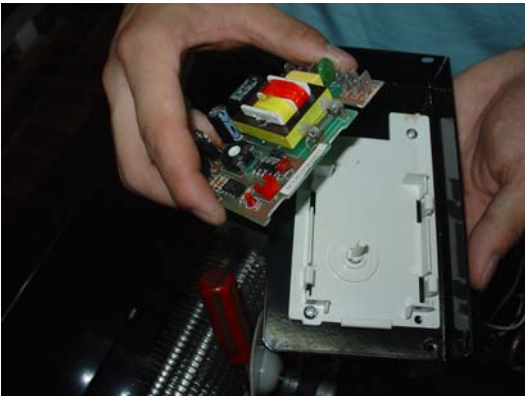
1-2-6-6、 Pull out all the connection of the control board.



1-2-6-7、 Loosen the control board fastener.

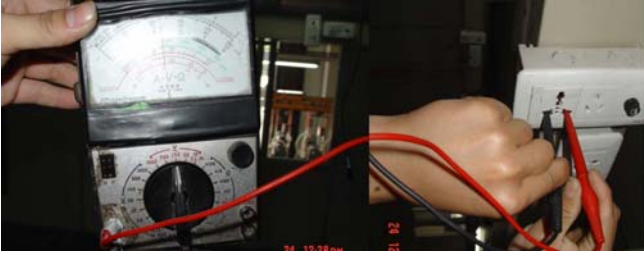


1-2-6-8、 Take out the control board and replace it.



1-2-6-9、 Powered, check the compressor work.

1-3, Check if the voltage in the socket, the ambient temperature and thermostat knob are ok. Pictures as below:



The voltage should be around 115V in the socket.
The proper temperature knob, see below picture:



1-4, Check whether there is a leakage in the refrigeration system

After the power has been on for some time, There is no change of the temperature in the cabinet.

1-4-1, Take off the power plug.



1-4-2, Take off the top cover. (way is same as 2-1 ---2-4)

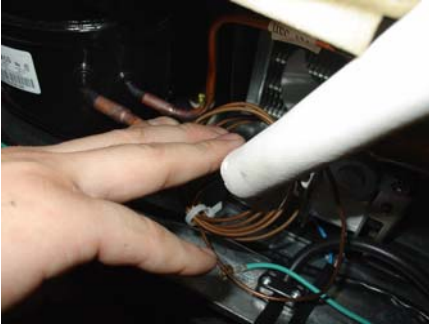
1-4-3, If compressor is shaking when you touch it by hand, it shows the compressor is working.



1-4-4, If exhaust pipe isn't hot when you touch it by hand after compressor running a period of time,



1-4-5、 The intake pipe isn't cool when you touch it by hand



1-4-6、 Then we can say machine has the problem of System Leakage. (Below is the repairing)

1-4-6-1、 Cut off the process tube



1-4-6-1、 Take off the process tube



1-4-6-2、 Replace it with a new process tube



1-4-6-3、 Fix the process tube by welding.



1-4-6-4、 Install the vacuumizing connector onto the process tube.



1-4-6-5、 Charge nitrogen. Charge 1Mpa the dried Nitrogen to the process tube



1-4-6-6、 Cover the welding point with towel that is soaked with soapsuds. If there is bubbles it means there is seam



1-4-6-7、 Re-weld the parts at which there are seams



1-4-6-8、 Test with towel while charging Nitrogen until there are no bubbles.



1-4-6-9、 Connect the vacuum pump with the processing tube and then vacuumize for more than 20 minutes.



1-4-6-10、 Connect the vacuum pump with canned bottle and then vacuumize for about 5minutes.



1-4-6-11、 Weigh the canned bottle.



1-4-6-11、 Charge the refrigerant into the canned bottle,



1-4-6-12、 Weigh the canned bottle after charging.



1-4-6-13、 Connect the canned bottle with the process tube and then compressor work for more than 5 minutes,
charge the refrigerant into compressor



1-4-6-14、 Weigh the canned bottle to check whether the refrigerant were charged completely



1-4-6-15、 Clamp the process tube and make it flat, and seal it after ensuring no leakage of the gas.





1-4-6-16、 Connect the refrigeration system to power and check whether there is any problem and then fix the back panel

2、 The wine cellar is not cooling enough.

2-1、 Avoid the cellar under direct sunlight or adjacent to heat source.

2-2、 The inside light keeps on long to cause the over high of the inner temperature

2-3、 Ensure the good ventilation around the cellar.

2-4、 Check whether the door is not closed firmly or whether the door has been opened for too long time.



2-5、 Check and ensure the door gasket is good enough.

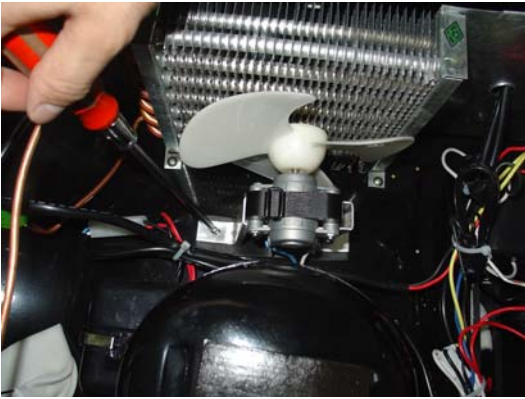


2-6、 Check the fan motor.

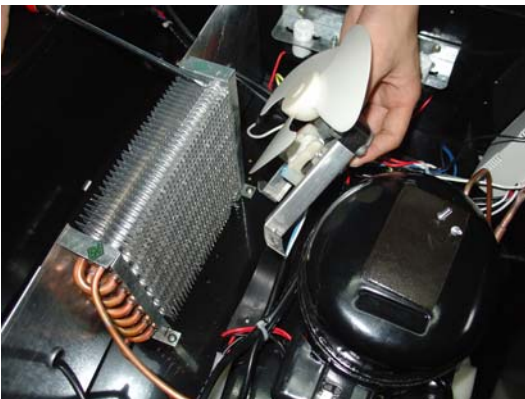
2-6-1、 Take off the back panel.

2-6-2、 If the fan motor is not running when the compressor is working, please repair it as following steps:

2-6-2-1、 Take off the fixing screws on the fan motor.



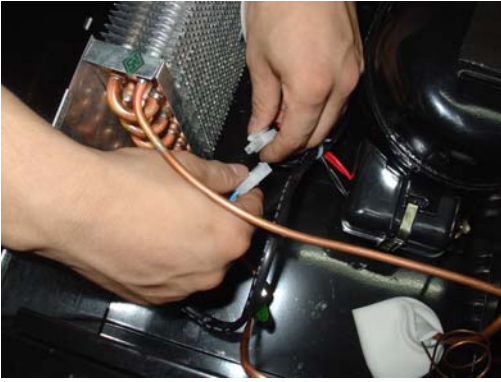
2-6-2-2、 Take out the fan motor.



2-6-2-3、 Pull out the blade.



2-6-2-4、 Pull out the terminal and then replace the fan.



2-6-2-5、 Insert the blade.



(6) 装好风机并通电检查，再装好顶盖板

Well install the fan motor .Get Powered and check if the fan motor is well installed. Recover the top cover.

3、 The cellar is too noisy.

3-1、 Make certain the cellar is properly leveled and standing firmly.



You may adjust the leveling legs to keep it level.

3-2、 Make sure the pipelines un-touching each other.



4、 The light is not on when the machine connected to the power.

4-1、 If the outside light is not bright, repairing methods as follows:

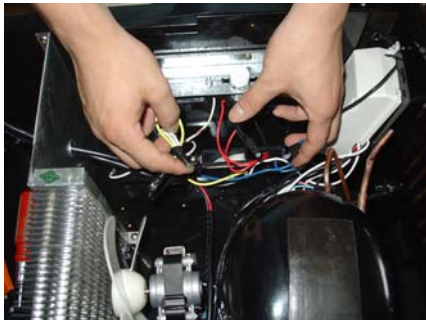
4-1-1、 Check if the light switch is on or off.



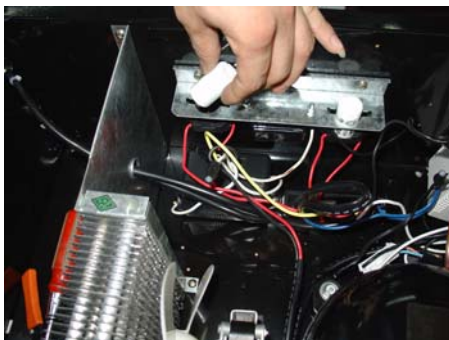
4-1-2、 Removing the power plug from the outlet and taking off the top cover.



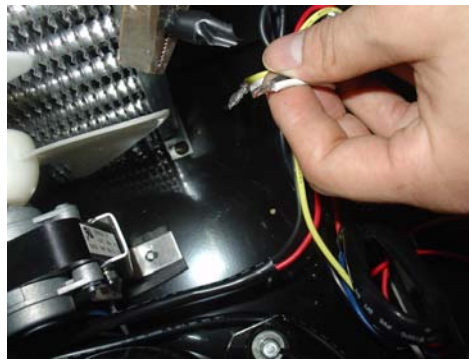
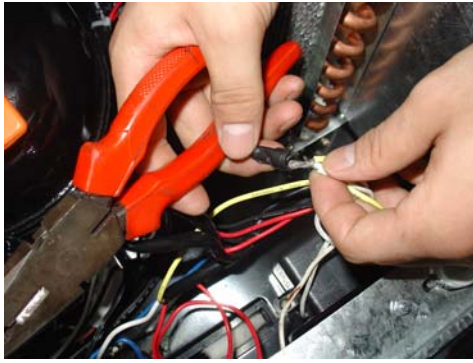
4-1-2、 Check the light connection tightened enough. If the light connection is wrong please replace it



4-1-3、 Replace the left starter. Check the lamp when connecting the plug.



4-1-4、 Loosen ballast connection.(white line)



4-1-5、 Make sure the multi meter on the electric resistance , then connect with the ballast.

If there is electric resistance , the ballast is good. If there is no electric resistance, it is not good. Replace the ballast.



4-1-5-1、 Check the lamp damaged or not, take off the screws on the sides of the canopy, then take out the canopy



4-1-5-2、 Rotate the light clockwise or in clockwise 90°and then remove the light.



4-1-5-3、

Connect the both terminals of the light to multi meter. Check the electric resistance, if there is not resistance the light is damaged. If there is resistance the light is good.(The both terminals of the light should be

measured)



If the light is damaged, please replace the light. (The light power is 15w.)

4-2、 The inside light refuses to work, replace methods as follow:

The methods of checking and replacing the starter and ballast are same as above.

Starter and ballast seeing the following picture:



The inside light repairing as follows:

4-2-1、 Take off the 3 screws on the light cover.



4-2-2、 Take off the light cover.



4-2-3、 Take off the bulb.



4-2-4、 Check the light and replace it , the methods as above: (The lamp power is 8W).

4-2-5、 Connect the power, the light is on and then disconnect the power

4-2-6、 Fix the light cover.



5、 Fan Motor Replacing

5-1、 Loosen the screws on the rack .



5-2、 Pull out the rack.



5-3、 Take off the screws on the fan motor cover and take it out..



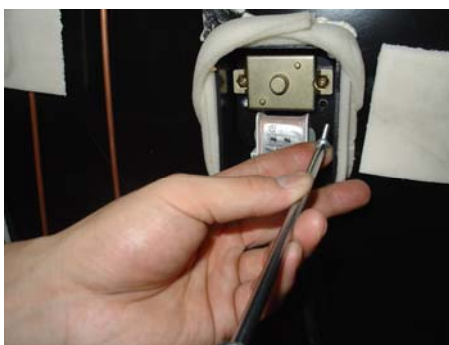
5-4、 Take out the blade.



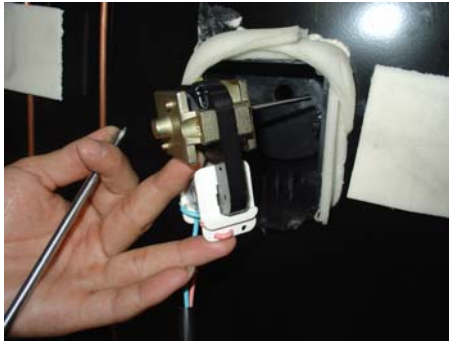
5-5、 Take off the screws on the back panel and take out the back panel.



5-6、 Take off the fixing screws on the fan motor.



5-7、 Take out the fan motor and replace it .



6、 Change the door

6-1、 Incline the cabinet, then take off the feet as below picture



6-2、 Take off the lower door axis screws. Support the lower door axis socket by hand before taking off the screws to avoid the lower door axis spring out.



6-3、 Pull out the door axis socket



6-4、 If the door can't shutdown automatically, replace the spring of the door axis



6-5、 Take out the door and replace the new door.



6-6、 Well install the spring of the door axis . See picture below



6-7、 Install the lower door axis socket and fix it

